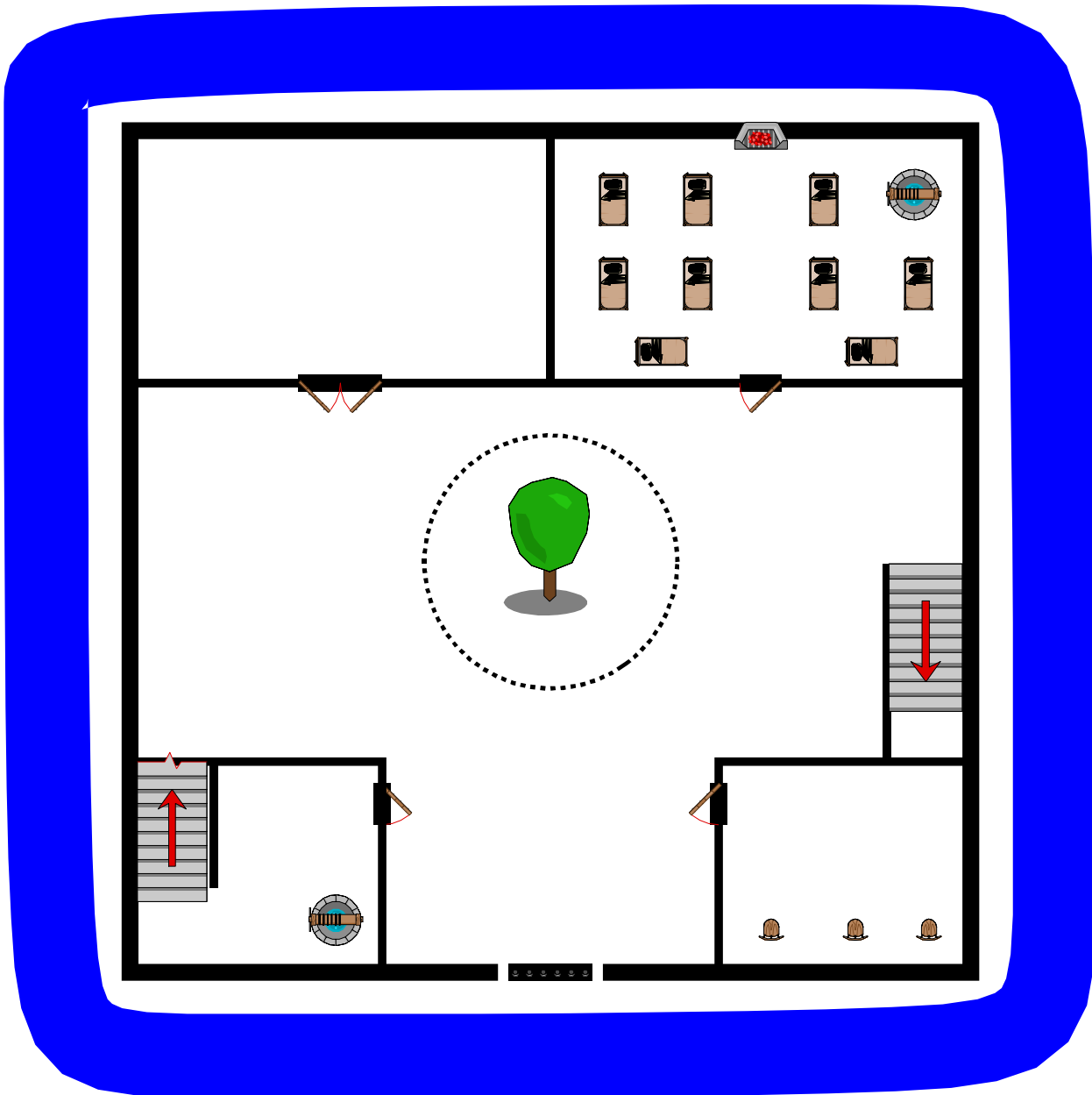


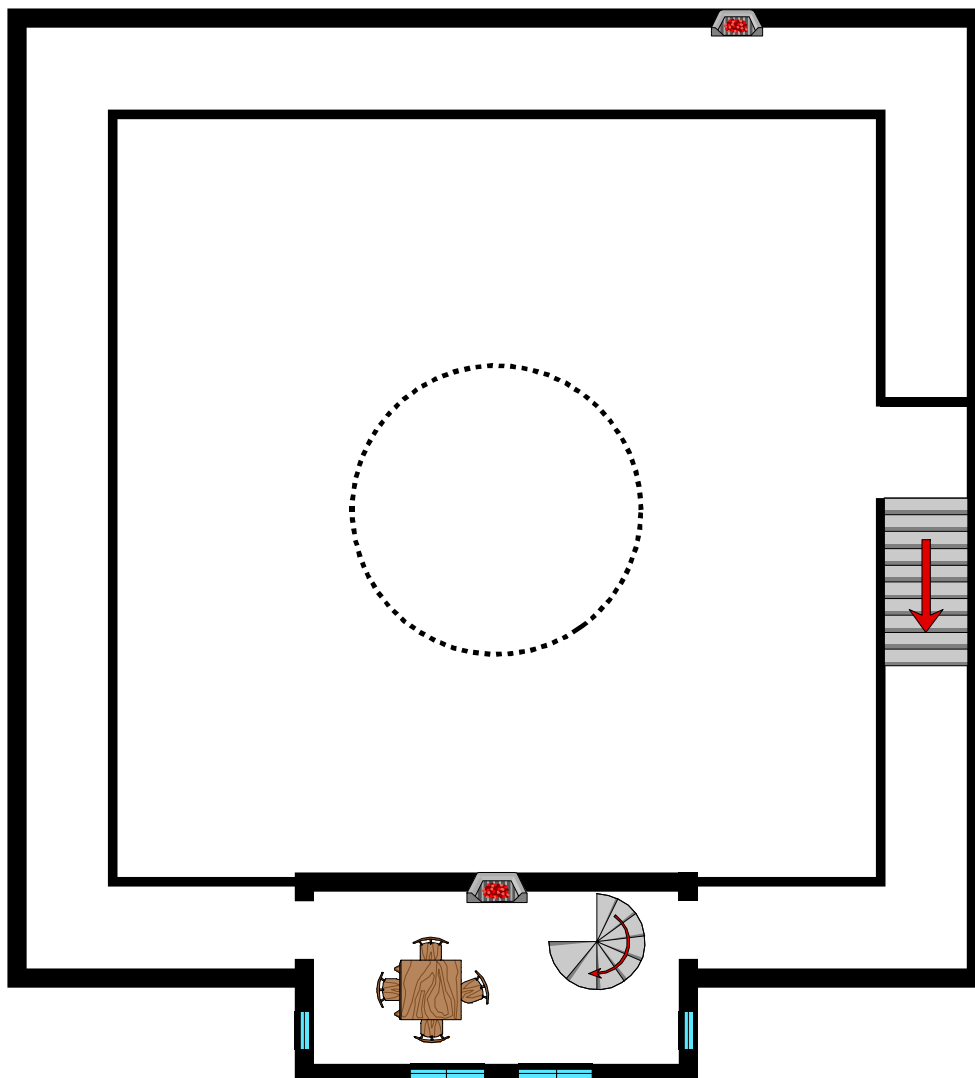
Ground floor of Grover's Keep. The stairs in the southwest corner lead down to the basement on page 3.

The moat is 15' wide. The keep is 100' x 100'. The hole cut in the roof over the tree is 30' in diameter. All doors are 3' or 5' wide.



Second floor. Holds the castle wall (goes all the way around EXCEPT where it meets up with the stairs again at the 3 o'clock position).

The walls are 20' high.



The pit in the southeast corner is 20' deep and 10' wide.

